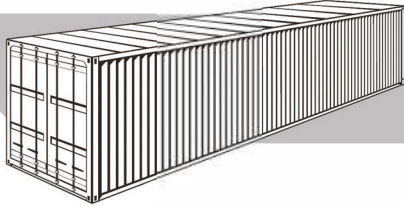




CONTAINER SPECIFICATIONS

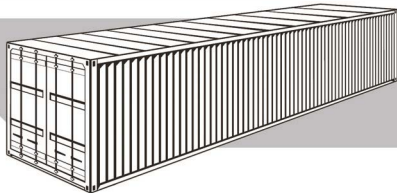
www.mlwwlogistics.com
866.729.3331

Below dimensions/weight only to be used as guidelines and may vary from Carrier to Carrier.



40' HIGH CUBE CONTAINER

Interior Dimensions (LxWxH): 12.056m x 2.347m x 2.684m (39' 6 1/2" x 7' 8 1/4" x 8' 9 1/2")
Door Opening (WxH): 2.340m x 2.585m (7' 8" x 8' 3/4")
Tare Weight: 2,900 kg (6,393 lbs)
Cubic Capacity: 76.0 cbm (2,684 cu. ft)
Payload: 29,600 kg (62,256 lbs)



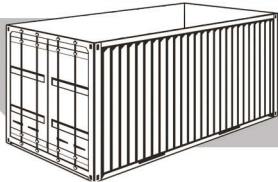
40' DRY CONTAINER

Interior Dimensions (LxWxH): 12.051m x 2.340m x 2.380m (39' 6 1/2" x 7' 8" x 7' 9 1/2")
Door Opening (WxH): 2.286m x 2.278m (7' 6" x 7' 5 1/2")
Tare Weight: 3,084 kg (6,799 lb)
Cubic Capacity: 67.3 cbm. (2,377 cu. ft)
Payload: 27,397 kg (60,401 lbs)



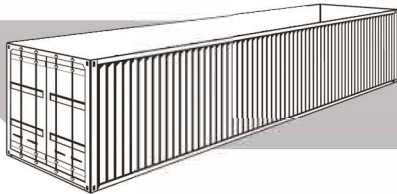
20' DRY CONTAINER

Interior Dimensions (LxWxH): 5.919m x 2.340m x 2.380m (19' 5" x 7' 8" x 7' 9 1/2")
Door Opening (WxH): 2.286m x 2.278m (7' 6" x 7' 5 1/2")
Tare Weight: 1,900 kg (4,189 lbs)
Cubic Capacity: 33.0 cbm. (1,116 cu. ft)
Payload: 22,100 kg (48,721 lb)



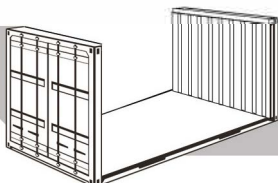
20' OPEN TOP CONTAINER

Interior Dimensions (LxWxH): 5.919m x 2.340m x 2.380m (19' 5" x 7' 8" x 7' 9 1/2")
Door Opening (WxH): 2.286m x 2.251m (7' 6" x 7' 4 1/2")
Tare Weight: 2,174 kg (4,793 lbs)
Cubic Capacity: 31.6 cbm. (1,116 cu. ft)
Payload: 21,826 kg (48,117 lbs)



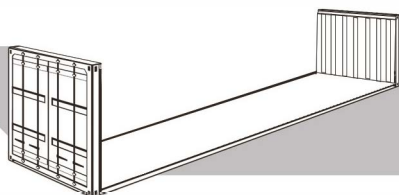
40' OPEN TOP CONTAINER

Interior Dimensions (LxWxH): 12.043m x 2.338m x 2.272m (39' 6" x 7' 8" x 7' 5 1/4")
Door Opening (WxH): 2.279m x 2.272m (7' 5 1/2" x 7' 5 1/4")
Tare Weight: 4,300 kg (9,480 lbs)
Cubic Capacity: 64.0 cbm. (2,260 cu. ft)
Payload: 25,181 kg (57,720 lbs)



20' FLAT RACK CONTAINER

Interior Dimensions (LxWxH): 5.702m x 2.438m x 2.327m (18' 8 1/2" x 8 x 7' 7 1/2")
Tare Weight: 2,330 kg (5,137 lbs)
Payload: 28,390 kg (47,773 lb)



40' FLAT RACK CONTAINER

Interior Dimensions (LxWxH): 11.820m x 2.148m x 2.095m (38' 9 1/4" x 7 1/2" x 6' 10 1/2")
Tare Weight: 5,260 kg (11,596 lbs)
Payload: 25,220 kg (55,600 lbs)